



Picture No:	15	Asset:	31	Description:	wrap machine
					

EQUIPMENT PASSPORT

Picture No:	12	Asset:	88	Description:	Counting machine
					

EQUIPMENT PASSPORT

Picture No:	23/24	Asset:	103	Description:	HYDRAULIC PLATFORM 3 PCS
					

EQUIPMENT PASSPORT

Picture No:	29	Asset:	n	Description:	exhaust fume extraction
-------------	----	--------	---	--------------	-------------------------



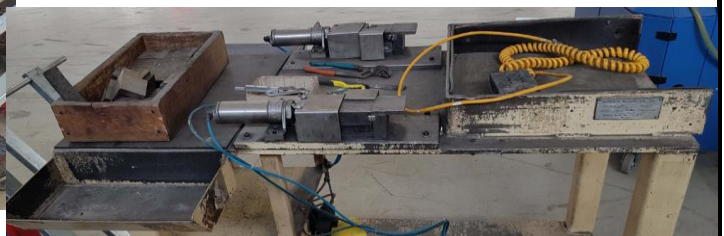
EQUIPMENT PASSPORT

Picture No:	30	Asset:	13	Description:	Generator NG 40
-------------	----	--------	----	--------------	-----------------



EQUIPMENT PASSPORT

Picture No:	34	Asset:	3	Description:	Clipper machine from large conical line
-------------	----	--------	---	--------------	---





EQUIPMENT PASSPORT

Picture No:	35	Asset:	177	Description:	Coolant Filter station SFC-200
-------------	----	--------	-----	--------------	--------------------------------



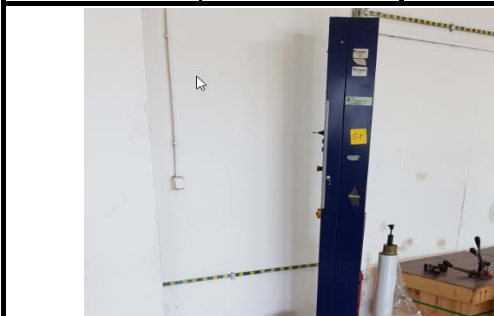
EQUIPMENT PASSPORT

Picture No:	37	Asset:	133/135/136	Description:	Oil Mist Separator 3nine - filter for CNC machine - 6 pcs
-------------	----	--------	-------------	--------------	---



EQUIPMENT PASSPORT

Picture No:	51	Asset:	30	Description:	wrap machine
-------------	----	--------	----	--------------	--------------





EQUIPMENT PASSPORT

Picture No:	61	Asset:	19	Description:	CNC LATHE MAZAK QUICK TURN NEXUS 250 II
-------------	----	--------	----	--------------	---



EQUIPMENT PASSPORT

Picture No:		Asset:	20	Description:	CNC LATHE MAZAK QUICK TURN NEXUS 250 II
-------------	--	--------	----	--------------	---



EQUIPMENT PASSPORT

Picture No:		Asset:	15	Description:	CNC LATHE MAZAK QUICK TURN NEXUS 250 II
-------------	--	--------	----	--------------	---





EQUIPMENT PASSPORT

Picture No:	69	Asset:	74	Description:	Shotblaster
-------------	----	--------	----	--------------	-------------



EQUIPMENT PASSPORT

Picture No:	67	Asset:	41	Description:	CONTINUOUS FURNACE FOR THE TEMPERING PROCESS
-------------	----	--------	----	--------------	--



EQUIPMENT PASSPORT

Picture No:	69	Asset:	24	Description:	FURNACE FOR THE TEMPERING PROCESS
-------------	----	--------	----	--------------	-----------------------------------





EQUIPMENT PASSPORT

Picture No:	36	Asset:	127	Description:	Grinder
-------------	----	--------	-----	--------------	---------



EQUIPMENT PASSPORT

Picture No:	*	Asset:	25	Description:	Cooling Tower
-------------	---	--------	----	--------------	---------------



EQUIPMENT PASSPORT

Picture No:	*	Asset:	25	Description:	Oil tank 5000 litres
-------------	---	--------	----	--------------	----------------------





EQUIPMENT PASSPORT

Picture No:	*	Asset:	60	Description:	Tent (outdoor warehouse)
-------------	---	--------	-----------	--------------	---------------------------



EQUIPMENT PASSPORT

Picture No:	*	Asset:	16	Description:	Fork Lift H16T linde from 2008
-------------	---	--------	-----------	--------------	--------------------------------



EQUIPMENT PASSPORT

Picture No:	*	Asset:	46	Description:	Platform SCALE AXIS 4B1500 - scale to 1,5 ton.
-------------	---	--------	-----------	--------------	--



IS AVAILABLE ON THE ZOW1
AS WAREHOUSE EQUIPMENT
Not for sale now.



EQUIPMENT PASSPORT

Picture No:	36	Asset:	25	Description:	Cooling Tower
-------------	----	--------	----	--------------	---------------

EQUIPMENT PASSPORT

Picture No:	36	Asset:	25	Description:	Cooling Tower
-------------	----	--------	----	--------------	---------------

EQUIPMENT PASSPORT

Picture No:	36	Asset:	25	Description:	Cooling Tower
-------------	----	--------	----	--------------	---------------

